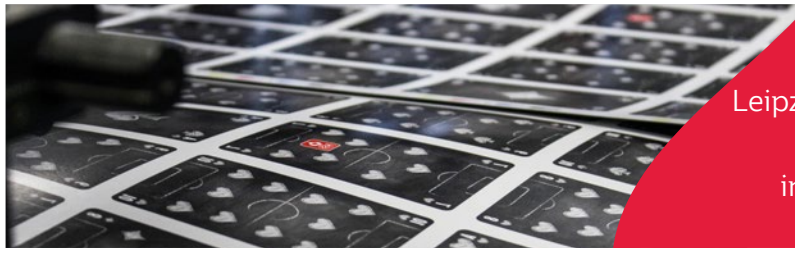


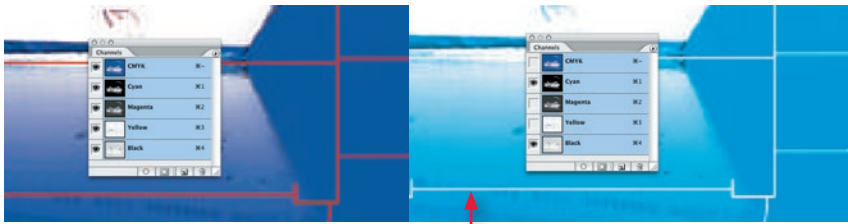
Layouts of boxes



Spielkartenfabrik Altenburg GmbH
 Leipziger Straße 7 · 04600 Altenburg/Germany
 Tel.: 0 3447/582-0 · Fax: 0 3447/582-109
 info@spielkarten.com · www.spielkarten.com

General information

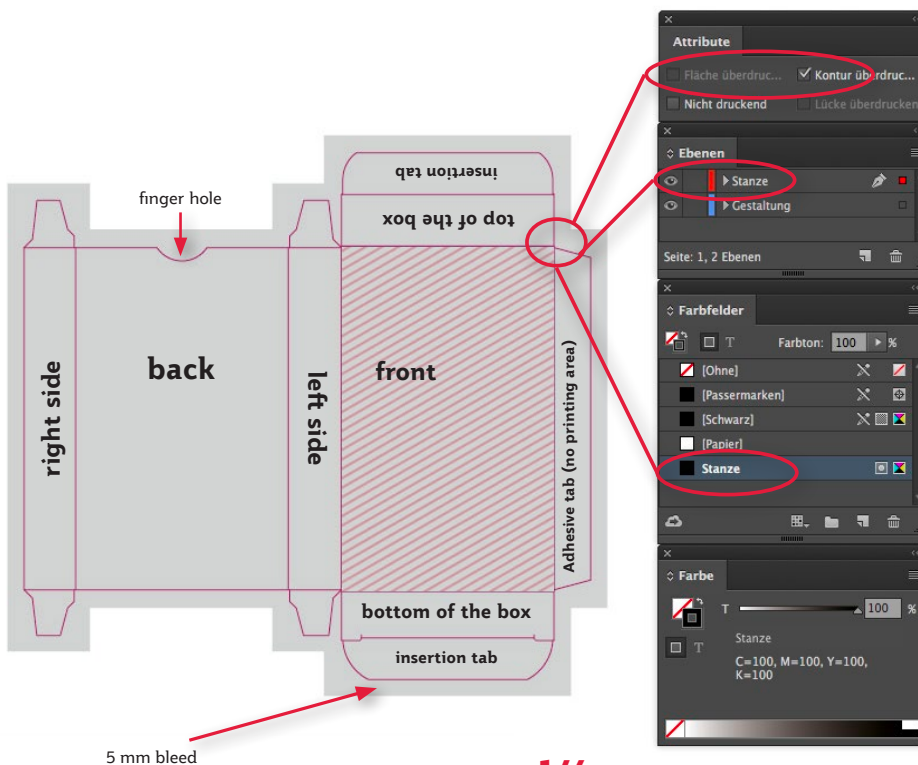
- Make sure that you use our die line template for boxes with „Stanze“ as spot color and with the attribute **“Overprint“**. Insert the template inside your layout software in a separate layer in **original size 100%**.



If the dieline is not declared for „Overprint“ the design is interrupted

Folding boxes

- Before you begin with your design ask your client advisor for a die line.
- Texts and important elements should be **at least 3 mm away from the die line**.
- Make sure that no visible elements are in the covered adhesive parts of the box.
- Create the layout with a bleed of at least 5 mm on all sides.



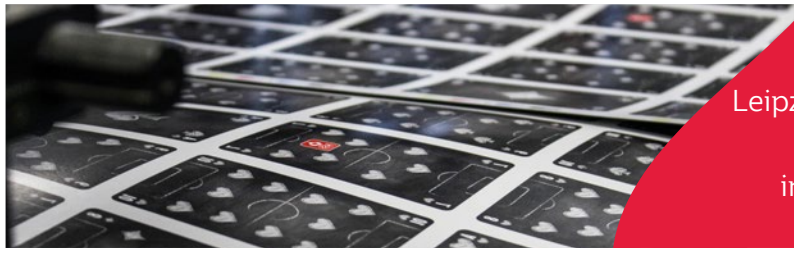
Attention! Labeling of toys!

Label your product **clearly to see at the outside** concerning the European guidelines for labeling toys with a **CE label, manufacturer information** (address), **product identification number** and if necessary with **warning symbols**.

For more information visit www.spielkarten.com >> **Gestaltungsrichtlinien** >> **Kennzeichnungsrichtlinie von Spielzeug** or ask our customer service.



Layouts of boxes

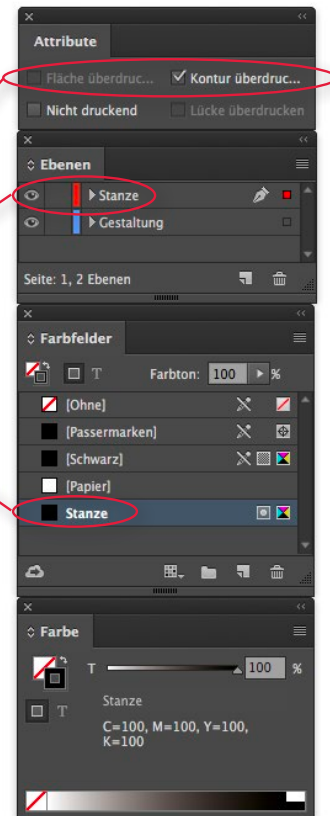
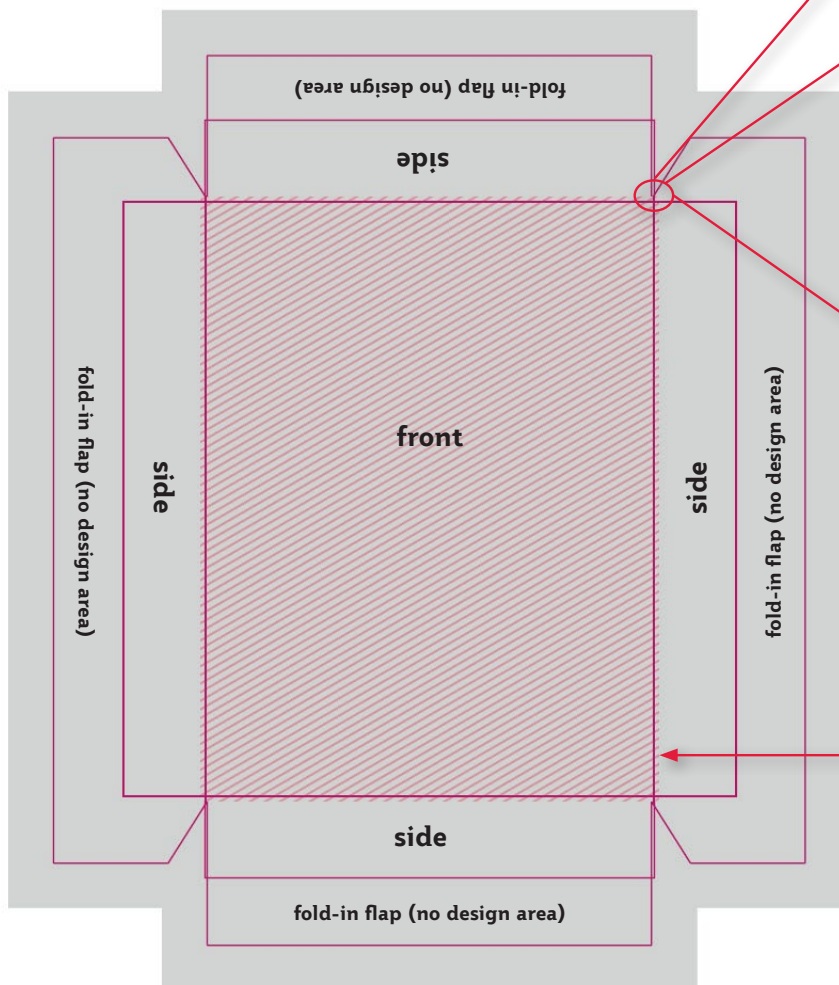


Spielkartenfabrik Altenburg GmbH
Leipziger Straße 7 · 04600 Altenburg/Germany
Tel.: 0 3447/582-0 · Fax: 0 3447/582-109
info@spielkarten.com · www.spielkarten.com

Slip boxes

- Before you begin with your design ask your client advisor for a **die line**.
- Texts and important elements should be **at least 3 mm away from the die line**.
- Make sure, that no visible elements are in the covered adhesive surfaces.
- Create the layout with a **bleed of at least 5 mm** on all sides.
- Optimal layout: All **elements on the front surface merge seamlessly into the side frames**. In this way you avoid fluctuation mistakes at the sides

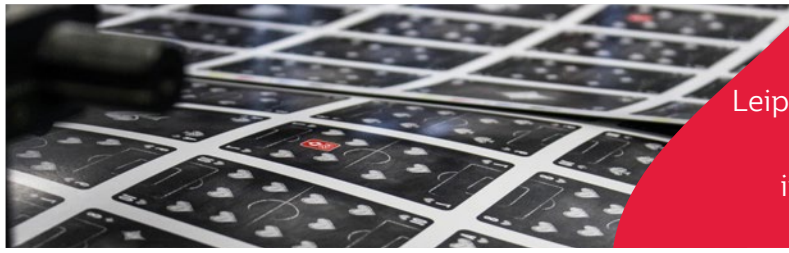
Lid design



5 mm bleed

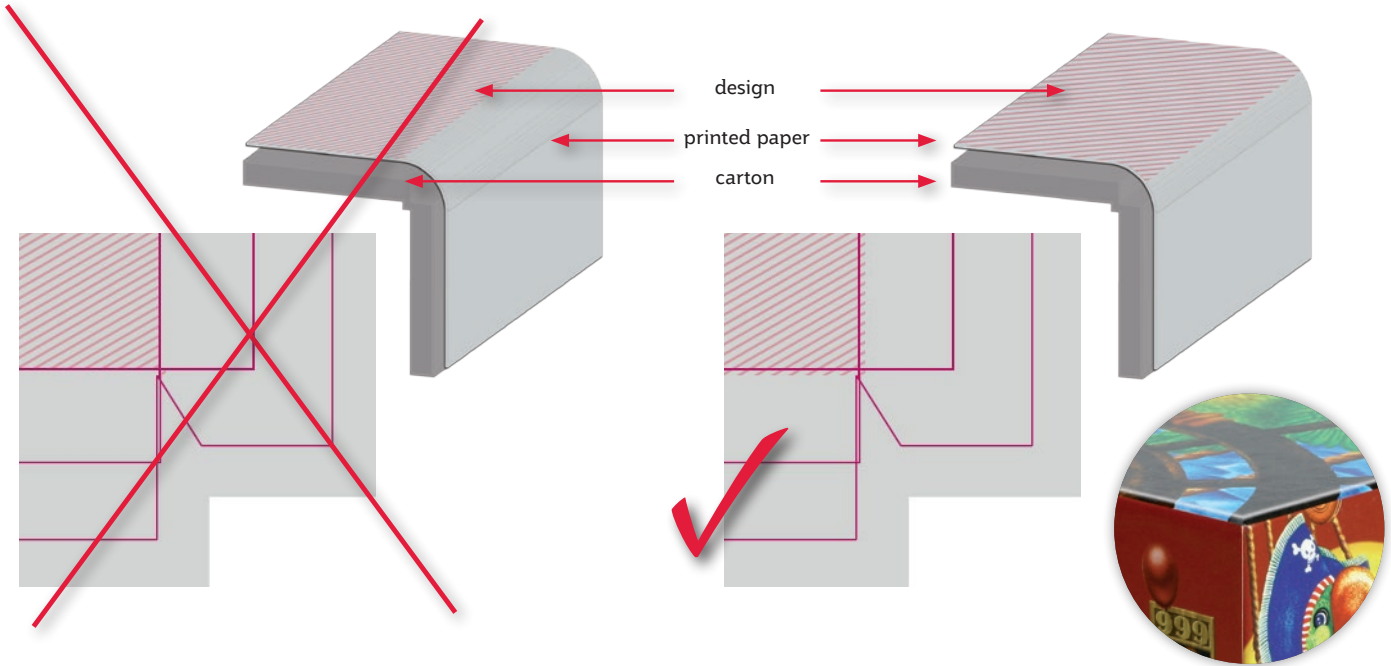
Create your front design overlapping
1 mm into the sides

Layouts of boxes



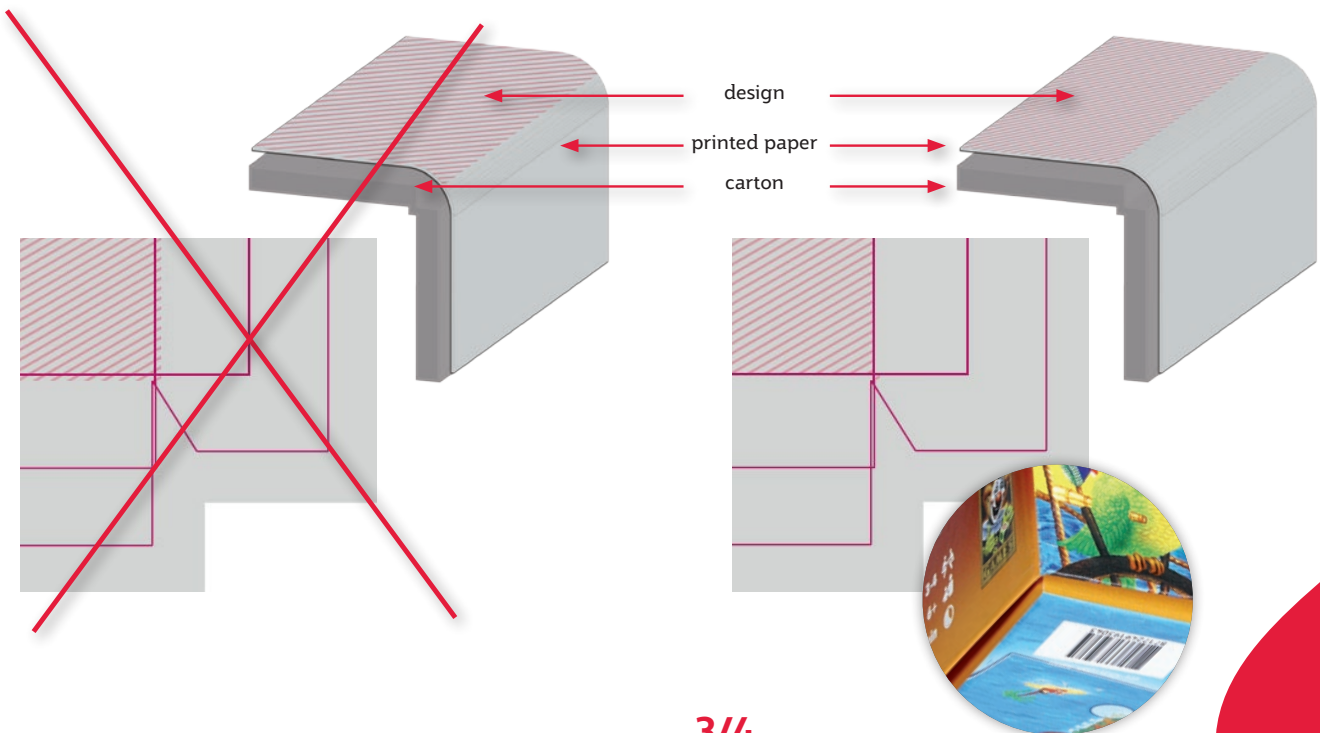
Spielkartenfabrik Altenburg GmbH
Leipziger Straße 7 · 04600 Altenburg/Germany
Tel.: 0 34 47/582-0 · Fax: 0 34 47/582-109
info@spielkarten.com · www.spielkarten.com

Attention! If the design of the front differs from the side design overlap the front design 1 mm into the sides. So deviations can be balanced in a better way (only do this for the lid design).

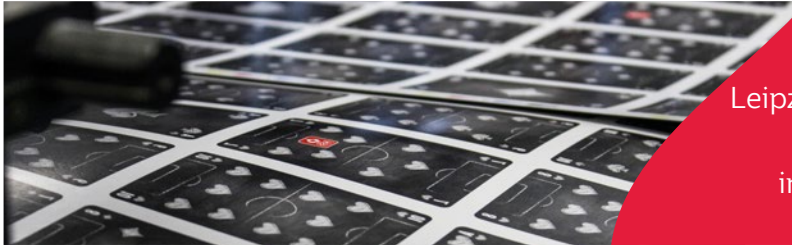


Bottom design:

In difference to create the lid the design of the bottom main area is fitted exactly into the die lines without overlap.



Layouts of boxes



Spielkartenfabrik Altenburg GmbH
Leipziger Straße 7 · 04600 Altenburg/Germany
Tel.: 0 34 47/582-0 · Fax: 0 34 47/582-109
info@spielkarten.com · www.spielkarten.com

Layout of the sides:

During the production of slip-lid boxes the printed paper is glued on the carton box (see figures before). The paper is drawn over the folded edge and the height of the sides increase. As result centered elements on the side move towards the front design area. So please move side elements 1 mm towards the outer edges to counteract (see figure beyond).

